

PROGNOSYS FOR 5500 sc

Eliminate last-minute maintenance emergencies.

PROGNOSYS is a predictive diagnostic system that allows you to be proactive in your maintenance, by alerting you to upcoming instrument issues. Know with confidence whether changes in your measurements are due to changes in your instrument or your water.



Measurement Indicator

The measurement indicator monitors the instrument's components and uses that information to alert the user to upcoming instrument needs before measurements become questionable.



Service Indicator

The service indicator tracks the number of days until the instrument will require maintenance or service.

Time to plan your maintenance *before* your measurements are affected.

MAINTENANCE REQUIRED



Measurement Indicator

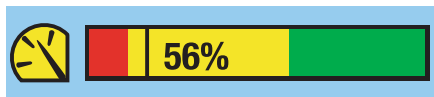
- Calibration slope is outside of acceptable limits
- Sample requires unusually high optics capacity
- Excessive light detected during sample reading
- Poor sample quality detected



Service Indicator

Maintenance required for filters, valves, pumps, tubing and other wear items

MAINTENANCE PENDING



Measurement Indicator

- Calibration is nearing unacceptable limits
- Sample requires more optical capacity than expected
- High light exposure during sample reading
- Questionable sample quality detected



Service Indicator

Expected maintenance required within 90 days for filters, valves, pumps, tubing and other wear items

MAINTENANCE PERFORMANCE



Measurement Indicator

- Calibrations are within acceptable limits
- Required optical capacity is within a reasonable range
- Minimal or no light exposure detected during sample reading
- Detected sample can be read accurately



Service Indicator

No maintenance required within the next 90 days

Many of the parameters and tasks considered for the maintenance indicator will also be displayed through the service indicator if the related instrument components require maintenance soon.